

For
Independently
Registered Girls
& Families

Juliette Guide to Girl Scouting



Welcome, Juliette Girl Scout!

Becoming a Juliette Girl Scout means you’ve decided to take the solo route to Girl Scouting and will choose your own adventure as an Independently Registered Girl (IRG)! Juliettes are named for our Movement’s founder, Juliette Gordon “Daisy” Low. They’re busy, independent and self-confident girls who want to be part of something girl-led and make a difference in the world.

Some girls become Juliettes when there are no available troops or not enough girls or leaders to create a troop. Rarely, troops disband. Those displaced girls become Juliettes. Girls at any Girl Scout level can be Juliettes. You could even band together with other Juliettes to create a troop by inviting friends and finding adults to help you!

Want to know the best part about being a Juliette? You weave Girl Scouting into your everyday life while not committing to anything extra! Because you don’t attend troop meetings regularly, you have freedom to design your experience based on your interests instead of the interests of a troop.

Incorporate badge work or fun patches into your family vacations! Play sports? Try relating that to a badge or patch! It’s not about creating another thing for you to do— it’s thinking about what you’re already doing in life and relating it to Girl Scouts. No matter what you’re into, there is undoubtedly a related Girl Scout patch or badge!

Have questions? Reach out to our staff to help you. Our Customer Engagement team can be contacted at 1.800.943.4414 or

info@gsnypenn.org.

We’re excited for you to begin your Juliette journey! We hope this guide will help you and your family along the way.

Yours in Girl Scouting,
Julie Dale, CEO
GSNYPENN



Juliette Caregiver Information


Caregivers play a big part in the Girl Scout experience for Juliette members. They encourage their Girl Scout to accomplish their goals and help them keep track of their progress. Caregivers may choose to register as an adult Girl Scout member to attend programs, events and trainings.



Other Juliette Caregiver Responsibilities:

- Signs girl membership form and pays annual national membership fee online
- Membership fee provides insurance coverage when your Juliette is involved in Girl Scout activities
- Signs parent/guardian permission slip for events and ensures necessary forms (like the girl’s health history) are turned into the Service Unit
- Sees that their Juliette arrives and is picked up on time for activities
- Pays for, uses Juliette funds or requests financial aid

A Brief Girl Scouts History




Girl Scouting was founded on March 12, 1912, by Juliette Gordon “Daisy” Low, who believed in the power of every girl. She began with a troop of 18 girls in Savannah, Georgia. Today Girl Scouts is the largest leadership organization for girls in the world. Currently, there are about 2.5 million girl and adult members worldwide!

Girl Scouts of NYPENN Pathways (GSNYPENN) is a regional council chartered and supported by our national organization, Girl Scouts of the USA (GSUSA), to deliver the Girl Scout Leadership Experience. We serve 26 counties—24 in New York and two in Pennsylvania. GSNYPENN was chartered in 2009 following the merger of five smaller Legacy Councils known as Central New York, Foothills, Indian Hills, Seven Lakes and Thousand Islands.

Girl Scouts isn’t just in the U.S., Girl Scouting and Girl Guiding is a global movement! We’re connected by the World Association of Girl Guides and Girl Scouts (WAGGGS) consisting of 10 million members across 152 countries. For more information, check out waggs.org. WAGGGS does some amazing things that you may want to become involved with as a Juliette Girl Scout!

At Girl Scouts, our motto is “be prepared” (a reminder to help out when needed) and our slogan is “do a good turn daily” (a reminder of the many ways girls can contribute positively to the lives of others). Our mission is to build girls of courage, confidence, and character, who make the world a better place. This mission is carried out by living within the guidance of the Girl Scout Promise and the Girl Scout Law.



Girl Scout Mission
Girl Scouting builds girls of courage, confidence, and character, who make the world a better place.



Girl Scout Promise

On my honor, I will try:

To serve God* and my country,
To help people at all times,
And to live by the Girl Scout Law.

*May substitute for the word God in accordance with your own spiritual beliefs.

Girl Scout Law

I will do my best to be

honest and fair,
friendly and helpful,
considerate and caring,
courageous and strong, and
responsible for what I say and do,

and to

respect myself and others,
respect authority,
use resources wisely,
make the world a better place, and
be a sister to every Girl Scout.

Girl Scout Levels



Daisy
Grades K-1



Brownie
Grades 2-3



Junior
Grades 4-5



Cadette
Grades 6-8



Senior
Grades 9-10



Ambassador
Grades 11-12



Adult



Juliette
Independently
Registered Member

Girl Scouts are grouped by school grade levels, not chronological age. After a Girl Scout graduates high school, she is no longer considered a girl member, but can still participate as an adult member or volunteer. Adult members can attend programs with girls, become troop leaders or volunteers for activities, or become part of Girl Scout alum events.

Membership

Girl Scouts follows a Member Year starting October 1 and ending September 30. GSUSA requires a nonrefundable annual fee for anyone to register as a member. This payment goes directly to GSUSA headquarters to provide program development and council support services.

We accept registrations at any point in the year, and this runs from the time you enroll until the end of the current Member Year. Registered members are covered by GSUSA's accident insurance while participating in activities. Parents, guardians and other adults are also invited to become members. Keep your eyes open for special registration incentives each year during our Early Bird Renewal. This starts in the spring.

Financial assistance is available to girls to supplement the cost of membership and other items as needed. Juliettes can apply for financial assistance which helps offset fees for council-sponsored events including programs, travel and camp. Visit gsnypenn.org/forms for more information or contact GSNYPENN Customer Engagement.

Uniforms

When it comes to uniforms there are a few things to remember. Each level has its own. Generally, Daisies wear a blue vest or smock; Brownies wear a brown vest or sash; Juniors wear a green vest or sash; and Cadettes, Seniors, and Ambassadors wear a tan vest or sash. There are also new and "non-traditional" uniform and apparel items and additional pieces available for purchase. These should be worn to Girl Scout events and programs to let people know what level you are, where you're from and what you're up to in Girl Scouting!

Generally, on the front of the uniform on the upper right-hand side, you wear the following patches: American flag, Council ID set and Juliette patch (instead of troop number). On the upper left side, you wear the Insignia tab with a WAGGS pin and a GS membership pin.

The front is also reserved for your badges, journeys and awards approved by GSUSA. The back is where you showcase any fun patches, pins, SWAPS or additional items you've earned during your Girl Scout year.

Each uniform should have its own set of badges/patches. Generally, we do not advise reusing them year to year. Besides, it's cool to look back on all your accomplishments and memories on each uniform! Some girls even make their former uniform into a pillow after they bridge to the next level. All uniform items are available for purchase through our stores or online sites. Our retail staff are knowledgeable and can help you find what you need. Send an email to store@gsnypenn.org or call our main phone line to get connected.



Badges & Journeys

Badges and journeys are created and endorsed by GSUSA as age-appropriate topics. Each level has its own badges and journeys, all of which are worn on the front of the vest, sash or uniform. All badges for each level are shaped the same way and have the same color scheme, which makes it easier for you to identify your pieces and to identify what level girls are at by looking at their uniforms. Girls follow the provided steps and once completed, can attach it to their uniform. Badges are available for purchase through our stores or online.

Fun Patches

Fun patches are like earned badges but generally go on the back of your vest, sash or uniform because most are not officially recognized by GSUSA. Fun patches are a great way to show people all the things you’ve done in Girl Scouts. Make sure to tell people about your patches and how you got them! People love to learn about what you’re doing in Girl Scouts! There’s a fun patch for almost anything—our stores and online shops carry many or our staff can always order something for you.


Fun patch ideas:

- Tours of buildings or well-known places (police stations, museums, capitol buildings, zoos/aquaria, etc.)
- Activities/crafts
- Parades
- Events
- Sports



Juliette Patch

This patch or emblem is worn by individually registered Girl Scouts on their sash or vest where troop numerals ordinarily would be, since you’re not affiliated with a troop. You can purchase one at our stores or online.



Community Partner Fun Patches & Badge Opportunities

Our Community Partners offer unique hands-on programming and specialized experiences that give Girl Scouts the chance to work towards earning badges or fun patches. To find out more about our Community Partners and available programs, visit gsnypenn.org/communitypartners.



Awards: Beyond Badges & Journeys

In addition to badges and journeys, girls can earn other awards for a variety of things. Each has its own activities and requirements. All awards are worn on the front of the vest, as GSUSA recognizes that extra work, education and pride goes into earning these.

Some awards are available for all levels to earn. These include Cookie Entrepreneur Pins, Safety Awards, Bronze Cross, Medal of Honor, International Friendship Award, Global Action Award and World Thinking Day Award. Other awards are only available to older girls (Cadettes and above) and include the Program Aide Award available to Cadettes, Service to Girl Scouting Bar and Community Service Bar available to multiple older girl levels, and the Counselor in Training and Volunteer in Training Awards available to Seniors and Ambassadors.



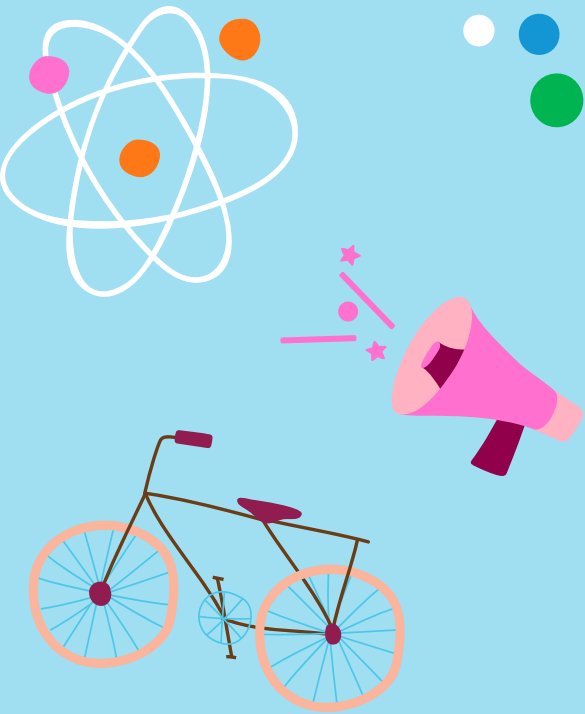
Highest Awards

Our most prestigious awards are known as Highest Awards. These take longer to earn and include a larger scale Take Action project designed to make a difference based on a topic chosen by the Girl Scout.

Highest Awards start at Junior level with the Bronze Award. Cadettes can earn their Silver Award. Seniors and Ambassadors can earn their Gold Award. Details of what it takes to earn one of the Highest Awards, as well as all required GSNYPENN training, can be found at gsnypenn.org/highestawards.

You should take some time to look these awards over and figure out which you want to work on, as each has its own rules and submission requirements. Have questions? Reach out to info@gsnypenn.org





Events & Programs

Girl Scouts offers a wide range of programming—everything from STEM (Science, Technology, Engineering, Math) to life skills to exploring the outdoors. Girl Scouts is committed to pursuing its mission through its programming and offers an astounding array of innovative, fun, and memorable activities.

GSNYPENN and its community partners offer in-person and virtual programming across (and sometimes traveling outside of) our 26-county footprint. Girls can attend any programs regardless of their hometown.

Program descriptions give you a glimpse into what it will cover, cost, if a badge or patch is provided and any other important information. Some programs require an adult chaperone, so be sure to reach out to our staff if you have any questions.

Registration and payment for programs is conducted through our online system called gsEvents and/or via the community partner direct. You can access this information using the event list at gsnypenn.org/events. Click through the listing to register.

We also share information in our all-member e-newsletter NYPENN News of Note and on our website and council social media accounts, too! *(Check out page 12 for more info.)*

Volunteer Toolkit & Program Materials

The Volunteer Toolkit (VTK) is your digital portal for easy, fun activities year-round! It's a step-by-step guide that will help each Juliette and their caregiver discover their Girl Scout path. It can be used from a computer, tablet or smartphone if you have internet access. Find it on our council homepage at gsnypenn.org by clicking myGS in the right-hand corner or visiting mygs.girlscouts.org. The caregiver must create the account.

The VTK helps your family set goals, choose what badges that interest you and set a timeline. It will assist with ideas, talking points, material lists and has other helpful resources. You can also add activities to a yearly plan: like service projects, field trips, events and product sales activities. For more information (including help on how to use the system), check out the VTK User Guide for Individually Registered Girls/Juliettes in the appendix of this guide.

To get started planning your Juliette Girl Scout year, visit the Explore tab in the VTK. Families can select a pre-selected year or build their own path. Once a path is selected, add additional meetings and activities to build the calendar. The VTK is loaded with helpful resources and options to customize your Girl Scout Leadership Experience. Each meeting offers activity choices that allow you to be as creative as you like! Resources are embedded into all meeting activities for a smooth planning and facilitation process. This allows complete customization for earning badges.

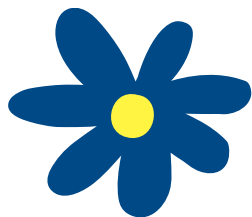
The VTK is filled with helpful resources; pull out what you need, use lesson plans word for word, etc. The choice is yours!

Resources

troop	troop	troop	troop	troop	troop
troop	troop	troop	troop	troop	troop
troop	troop	troop	troop	troop	troop
troop	troop	troop	troop	troop	troop
troop	troop	troop	troop	troop	troop
troop	troop	troop	troop	troop	troop
troop	troop	troop	troop	troop	troop
troop	troop	troop	troop	troop	troop
troop	troop	troop	troop	troop	troop
troop	troop	troop	troop	troop	troop

MEETING PLANNER

6:00	As Girls Arrive: Snack	00:05	
6:05	Opening Ceremony	00:05	
6:10	Ask Your Parents to Introduce You to One of Their Adult Friends	00:20	
	<input type="radio"/> Introduce Yourself		
	<input type="radio"/> Introduce a Friend to Someone Else		
	<input checked="" type="radio"/> Ask Your Parents to Introduce You to One of Their Adult Friends		
6:40	Sit at a Different Table or Area at Luncheon or Play with a Different Group at Rec		
	<input type="radio"/> Invite Another Member Group to an Activity		
	<input checked="" type="radio"/> Sit at a Different Table or Area at Luncheon or Play with a Different Group at Rec		
	<input type="radio"/> Go to a Dance or Art Class, Sports Game, Camp, or Other		
7:20	Closing Ceremony		



Shop Our Stores

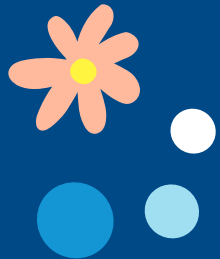
Our Girl Scout stores and online shop offer everything you need for uniforms, earning badges and journeys, fun patches and a wide variety of branded and fun items. Our friendly and knowledgeable staff are here to help!

We have physical stores in Cicero and Horseheads and may offer mobile or pop-up shops or item delivery during certain times of the year. Stores hours, current promotions and more can be found at gsnypenn.org/shop.

No matter where you live, we offer many shopping options:

Call us or email store@gsnypenn.org to order items using a credit card, orders are shipped or can be arranged for in-store or curbside pick-up

Shop our online GSUSA/GSNYPENN store for official core merchandise at girlscoutshop.com/NYPENN-PATHWAYS-COUNCIL



Get Outdoors at Camp

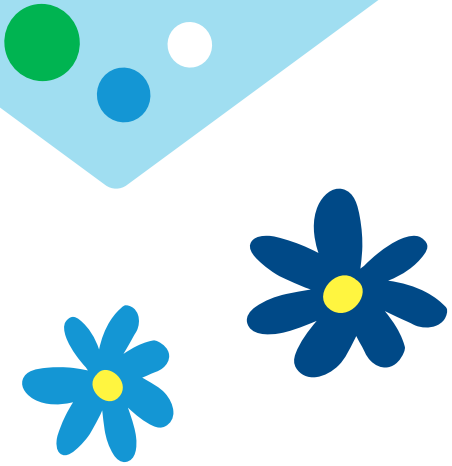
We operate four camp properties: Amahami in Deposit, N.Y.; Comstock in Ithaca, N.Y.; Hoover in Tully, N.Y.; and Trefoil in Harrisville, N.Y. We run outdoor programs at these properties regularly and offer a full schedule of summer camp opportunities.



Each property has its own Camp Director who runs programs and directs camps, in addition to a full-time Ranger on the property year-round. More information is available on our website at gsnypenn.org/camp. Each camp also has its own Facebook and Instagram page, so be sure to like and follow them!



When it comes to summer camp, Juliettes are on an “even playing field” with other GSNYPENN members because girls register as individuals, not as a troop. We also allow non-Girl Scouts to attend camp, so if you want to bring a friend, you can! Financial aid is available for those who may need assistance to attend. For more information, reach out to your Customer Engagement team.



SWAPS

Girl Scouts have a tradition of making small tokens of friendship to exchange with other Girl Scouts they meet while traveling. These little gifts are called SWAPS, which stands for “Special Whatchamacallits Affectionately Pinned Somewhere.”

They are often created on safety pins using scraps of fabric, art supplies or things found outside. The pins are useful so that you can attach it to the back of your uniform, but SWAPS don’t have to be pins; they can be any small thing you create. Often, girls will attach a small piece of paper that includes some way of remembering where or from whom they received the SWAP.

The rules of SWAPS are simple. You never refuse a SWAP from a sister Girl Scout, you always say, “thank you” and you never pin it on another girl’s uniform without her permission. You can do a quick online search for all kinds of SWAPS ideas.



Ways to Stay Engaged

You'll receive our biweekly all-member council e-newsletter, News of Note, to learn about upcoming events and programs, fun things happening and important updates you and your family may need to know. Ensure you're opted in to receive our emails by checking your member communications preferences at mygs.girlscouts.org.

Your Service Unit (SU) is how you stay engaged with your local Girl Scout sisters. A SU is made up of all troops in a designated area. There are people with special titles—like SU Manager or SU Cookie Coordinator—who can help you with product sales or SU events. You can also ask to be added to their email list for SU updates or their SU Facebook page, so you're less likely to miss upcoming events or important information.

Some SUs have a role called Individual Girl Coordinator, which is a designated volunteer who helps Juliettes! Ask your SU if they have one. Or, if you'd like more information on filling this position for your SU, ask your Membership Engagement Manager for details!

More Tips to Stay Connected:

- Visit our website at gsnypenn.org regularly to keep up to date
- Find & join your SU's Facebook page
- Find & follow us on social media, we have the following channels:



Juliette Group Account

As a Juliette, you have money available as part of a group account held by the council on your behalf. This money comes from your participation in product programs and funds are managed by the Membership Support Assistant and product team in collaboration with our finance department. Purchases in our stores with Juliette funds can be made in-store, over the phone or via e-mail. Contact info@gsnypenn.org for information on using funds.



Product Programs

Product sale programs support girl and troop activities and help maintain the overall operation of each regional council. Properties, equipment, adult training, activities, insurance and administrative support to volunteers are all important parts of our program and are funded in part by product sale programs.

We offer two annual product sales opportunities: Treats, Reads & More in the fall and the Girl Scout Cookie Program in winter-early spring. Juliettes can (and should) participate in both to earn money for activities. Proceeds can offset either all, or a large part of, the cost of GS activities and relieve caregivers of this obligation, too!

To participate, girls must be registered for the current Member Year. They must also provide a signed copy of the current Permission and Responsibility Form to the SU Product Manager or council Product Sales team and notify the SU Product Sale Coordinator that they want to participate. This person will provide training, materials and program information for the Juliette and her caregivers. If you need help determining your SU contact, our staff can help. Please note: funds do expire if there is a lapse in your membership.

Treats, Reads & More Program

During Treats, Reads & More, most sales are completed online using a web platform provided by the vendor and council called M2. Share your online order link and items will be shipped either to you for personal delivery to your customer, or the customer can have items shipped directly to their home. Juliettes can sell personally to people they know by using an order card and collecting prepayment. It's an easy way to earn money to help pay for your Girl Scout experience! Patches and earned rewards are distributed by SU Product Sale Coordinators typically in December-January.



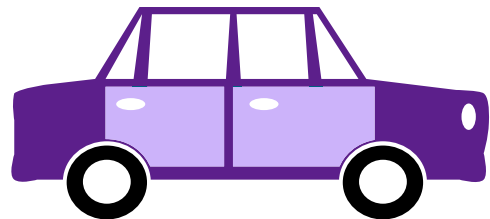
Girl Scout Cookie Program

During the annual cookie program, Juliettes give their order card and online orders to SU Cookie Coordinators by a specified date. Your order is processed with those of local troops. Money collected by Juliettes must be deposited into a council account using deposit slips provided by our Finance team and dates are provided at the start of the sale. Cookie orders are picked up by caregivers by scheduling with SU Cookie Coordinators (special arrangements can be made with your Membership Support Manager). Juliettes earn rewards and patches distributed by their cookie coordinator and can also earn group prizes just like troops; awards are based on sales of a group of surrounding Juliettes.



Trips & Travel

At Girl Scouts, we believe in giving girls the chance to travel across the world. Travel is a progressive activity within Girl Scouts, and trips are designed to be age-appropriate. Younger girls can go on trips within the state. As they age, they can travel outside the state and even internationally. Travel helps girls become strong, independent, confident and knowledgeable beyond their neighborhoods. They can learn about different cultures, experience things firsthand and meet girls from other states or countries. Juliettes travel alongside girls in troops and adults. Juliettes can also take part in GSUSA-sponsored Destinations. Each trip has its own plans, fees and rules associated based on where girls go and what they do. You can find more information at gsnypenn.org/travel.



Council-Sponsored Special Interest Groups

We have several special interest groups to participate in as a Girl Scout and Juliettes can, too! For more information, ask your Membership Engagement Manager.

- **Mariners** – all things boating
- **Trailblazers** – hiking & more
- **Girl Advisory Board** – girls from across council advise our CEO on issues facing girls today
- **River Raiders** – paddling

Appendix

- [VTK User Guide for Individually Registered Members/Juliettes](#)
- [GSUSA Award and Badge Explorer: girlscouts.org/badgeexplorer](https://girlscouts.org/badgeexplorer)
- [GSNYPENN Highest Awards: gsnypenn.org/highestawards](https://gsnypenn.org/highestawards)
- [GSNYPENN Important Forms: gsnypenn.org/forms](https://gsnypenn.org/forms)



My Juliette Journal

This journal belongs to:

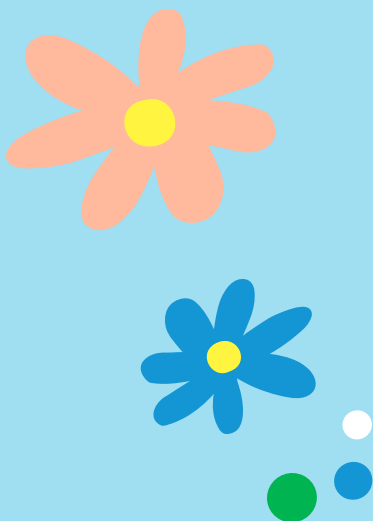
My council is: **Girl Scouts of NYPENN Pathways**

My council contact: **Customer Engagement:**

1.800.943.4414 or 315.698.9400, info@gsnypenn.org

My Service Unit (SU) is:

My SU contact name & number:



Ideas & Interests I want to explore as a Juliette:

What I hope to discover as a Juliette:

Ways I want to connect with my community as a Juliette:

How I hope to make the world a better place as a Juliette:

Notes:

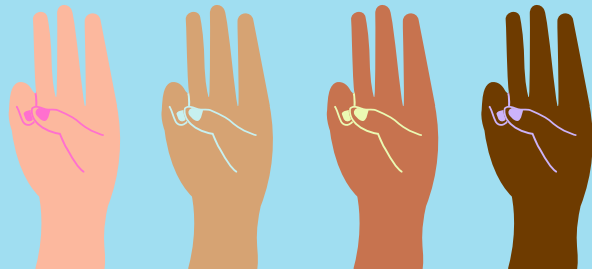


We Are a Network

Girl Scouts of NYPENN Pathways (GSNYPENN) is chartered by Girl Scouts of the USA to administer the Girl Scout program in 24 counties of New York and two in Pennsylvania. We're an independent 501(c)3 nonprofit that fundraises to manage operations of programs, camps and other council-led activities.

Within GSNYPENN are Service Units, entities governed by council policies and managed by volunteers who support the day-to-day operations of troops. Troops are groups of girls led by adult volunteers who have been background checked by the council.

Girl Scouts is the preeminent leadership development organization for girls. We offer every girl a chance to practice a lifetime of leadership, adventure and success. We are dedicated to serving our council membership. Your support stays local and gives girls across our region the opportunity to experience the Girl Scout Leadership Experience.



Visit gsnypenn.org/locations for complete information on our service centers, stores and hours of operation.



Contact Us!



➦ gsnypenn.org
☎ 1.800.943.4414 or 315.698.9400
✉ info@gsnypenn.org
📷 [instagram.com/gsnypenn](https://www.instagram.com/gsnypenn)
📘 [facebook.com/gsnypenn](https://www.facebook.com/gsnypenn)
📺 [youtube.com/girlscoutsofnypennpathways](https://www.youtube.com/girlscoutsofnypennpathways)
📍 Girl Scouts of NYPENN Pathways